

# MILWAUKEE COLLEGE PREP

## FUNDING REQUEST *for* NATURAL SCHOOLYARDS

03 | 11 | 2024



# Index

---

## Page 3:

Letter of Inquiry

## Page 4:

The Cause: Milwaukee College Prep

## Page 5:

The Project: Natural Schoolyards

## Page 6:

The Request: Funding Needs

## Page 7-10:

Details: Natural Schoolyards Project

## Page 11-14:

Background: About Milwaukee College Prep

## Page 15:

Donate Today

## Page 16:

MCP Mission Statement





**36TH STREET CAMPUS**

2449 N. 36TH ST.  
MILWAUKEE, WI  
53210  
(414) 445-8020

**38TH STREET CAMPUS**

2623 N. 38TH ST.  
MILWAUKEE, WI  
53210  
(414) 445-1000

**LLOYD STREET CAMPUS**

1228 W. LLOYD ST.  
MILWAUKEE, WI  
53205  
(414) 264-6000

**LOLA ROWE NORTH CAMPUS**

1350 W. NORTH AVE.  
MILWAUKEE, WI  
53205  
(414) 264-6600

**MCP3 CAMPUS**

1350 W. NORTH AVE.  
MILWAUKEE, WI  
53205  
(414) 264-6007

**FOUNDER & PRESIDENT**

RON SADOFF

**BOARD OF DIRECTORS**

MARVIN BYNUM  
LAFAYETTE CRUMP  
LESLIE DIXON  
MELISSA FARRINGTON  
TOM FLORSHEIM, JR.  
TIM GEREND  
ALAN GOODMAN  
COREY HOZE  
RAVEN JEMISON  
AMY JUNKER  
BENJAMIN KAREK  
CRAIG KARMAZIN  
JIM ROWE  
MICKY SADOFF  
TIM SHEEHY  
TEDDY WERNER

**CEO**

ALFRED KEITH IV

March 11, 2024

To Whom It May Concern:

Providing hope through education, Milwaukee College Prep (MCP) has been a trailblazer, a disrupter, and a constant reminder that all children are capable of great things, no matter their zip code. MCP's campuses are deliberately situated in some of the most segregated neighborhoods in the nation's most segregated city, which is home to the nation's largest race-based achievement gap. And yet, MCP is proving that it doesn't have to be that way.

In fact, measured by achievement, growth, on-track graduation and attendance, each of MCP's four K-8 schools are recognized by Wisconsin Department of Public Instruction (DPI) as "exceeding expectations". MCP does more with less. Our schools receive 20% less funding than our public-school counterparts. Despite funding inequities, MCP is successfully closing the opportunity gap in our city. But we cannot fully achieve our goals this without the continued support of donors.

This year, MCP will receive a \$500,000 grant from Milwaukee Metropolitan Sewerage District (MMSD) to begin a major stormwater reduction project, which is expected to begin in Spring/Summer 2025. This project will properly manage stormwater, benefitting the Triangle North and Lindsay Heights neighborhoods and will save the school an estimated \$3,600 each year.

**In tandem with MMSD's stormwater management project, MCP would like to develop a natural schoolyard at Lloyd Street School.** Led by Greenprint Partners—an award-winning planning, design, and engineering firm that delivers inspired green infrastructure in urban environments—this natural schoolyard will beautify the exterior of the Lloyd Street campus and expand the school's learning areas to include safe and thoughtfully architected outdoor education spaces. Design plans include dedicated outdoor classroom spaces, a butterfly garden, landscaping throughout the property, and more.

The benefits of outdoor, natural schoolyards for our scholars include:

- Familiarity with and appreciation of nature
- Building stewardship skills for the environment
- Expanded areas outdoors for both physically active and less active play
- Opportunities for scholar self-directed learning experiences and activities
- Diverse play options with imaginative and creative play

Working closely with MCP teachers and staff, Greenprint has designed a natural schoolyard and other sustainable landscaping features for MCP Lloyd Street School, which is detailed in this proposal; however, this project requires \$82,000 in special project funding. MCP would be grateful to you for your consideration of a financial gift to help bring the first phase of this project to life for our 500 scholars at Lloyd Street School.

On behalf of our staff, our scholars, and their families, we thank you for your consideration. If you have questions about this project, please direct them to Robyn Swernoff at [development@milwcollegeprep.com](mailto:development@milwcollegeprep.com).

Sincerely,

*Alfred Keith IV*

Alfred Keith, IV  
Chief Education Officer

# The Cause

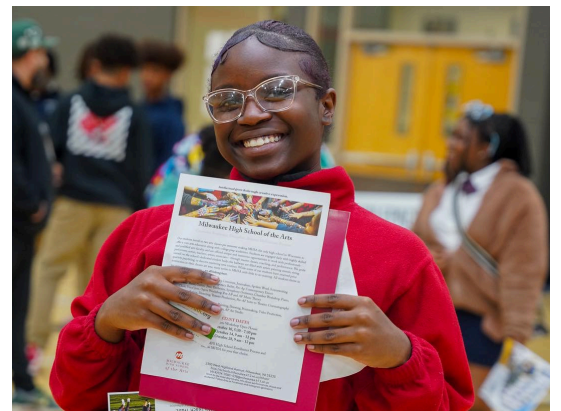
For nearly three decades, Milwaukee College Prep (MCP) has been at the forefront of redefining what's possible in urban education. As a leading network of four public charter schools serving families in central Milwaukee, MCP offers a leading K-8 education free of charge to 2,000 children in some of the city's most underserved communities. In fall 2022, MCP also launched a pre-kindergarten program, offering high-quality early childhood education focused on both social-emotional and academic development 3- and 4-year-old children.

MCP scholars are predominantly black (91%) and economically disadvantaged (90%). Historically, students of color, those from low-income families, and students with mild to moderate disabilities have less access than their peers to grade-appropriate assignments, strong instruction, deep engagement, and teachers who hold high expectations. But no matter the age or the campus, MCP schools, scholars and staff truly live the organization's mission, "knowledge plus character pave the road to college and beyond."

With a proven model of success, MCP is proudly removing barriers in order to help close the indefensible achievement gap in our city.

*Please refer to page 14 for highlights on the achievements of our scholars and educators.*

With your support, Milwaukee College Prep will be able to provide additional academic resources, tools and special programming for our scholars and their families in order to help close the opportunity gap in our schools.



'23 DPI Report Card Rating



**MILWAUKEE COLLEGE PREP**  
COLLEGE BOUND. CHARACTER STRONG.

KNOWLEDGE PLUS CHARACTER PAVE THE ROAD TO COLLEGE AND BEYOND  
[MILWAUKEECOLLEGEPREP.COM](http://MILWAUKEECOLLEGEPREP.COM)



# The Project

Milwaukee Metropolitan Sewerage District (MMSD) has awarded MCP a grant to undergo a stormwater management project beginning fall 2024. With this MMSD-grant-funded project underway, MCP has the unique opportunity to develop in tandem a natural schoolyard at Lloyd Street School. If MCP is able to secure additional funding to support the addition of a natural schoolyard on the Lloyd Street campus, MCP will be able to utilize existing crews on the property to create unique outdoor spaces.

The photos below outline the vision for the proposed natural schoolyard enhancements for MCP's Lloyd Street campus, which will feature sustainable greenspaces including a bioswale butterfly garden and storybook trail, boulder and bench seating to create unique outdoor classroom spaces, a gaga pit for outdoor recreation, and more.



## Proposed Outdoor Upgrades:

Amphitheater & Outdoor Classroom



Informal Seating Areas



Native Planting



Crush Stone and Re-use Painted Pavers



Butterfly Paintings and Houses



Student Plant Cultivation



Expanded Butterfly Garden



Stepping Stone Pathway in Bioswale



Interactive Sensory & Learning Garden



Story & Learning Trail



# The Request

Your support changes lives. MCP needs to raise **\$82,000** to support this project at Lloyd Street School. This funding will allow MCP to make the following improvements to the exterior of the Lloyd Street campus to beautify the school and create natural schoolyard spaces for our scholars:

## **\$40,000** BIOSWALE BUTTERFLY GARDEN

Includes crushed stone pathway, stepping-stone pathway, amphitheater stone seating, informal log seating, freestanding pots with Habitat Houses, new posts to re-locate existing butterfly paintings, re-located painted pavers, re-located painted benches

## **\$10,000** PLANT CULTIVATION GARDEN

Includes raised garden bed and mulch seating

## **\$12,000** STORYBOOK TRAIL & GARDEN SEATING

Includes informal log seating, boulder seating, and storybook signs

## **\$9,000** ENTRANCE IMPROVEMENTS

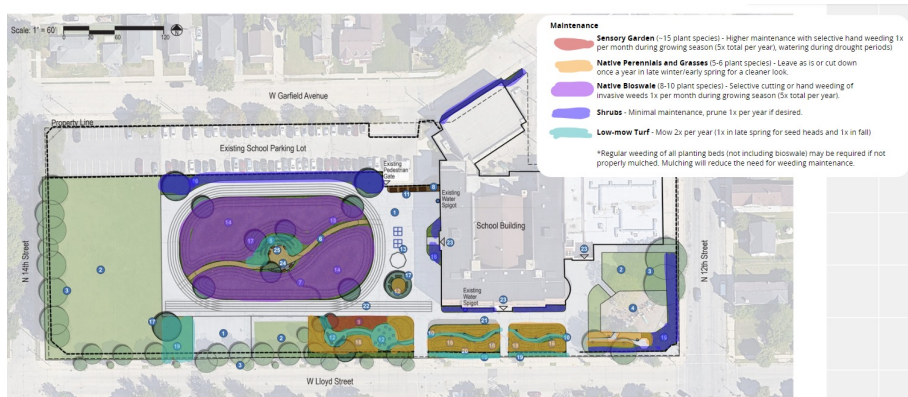
Includes chain-link fencing and asphalt paving along south entry

## **\$7,000** BENCHES AT TRACK

Includes bench seating around the outdoor track

## **\$4,000** GAGA BALL PIT & TRACK PAINT

Includes a gaga pit and paving paint.



No donation is too small to help MCP develop a natural schoolyard for our Lloyd Street scholars!

Donations exceeding \$2,500 will be recognized on MCP's website. Or become a title sponsor and fully fund one of our outdoor spaces! All title sponsors will receive a placard in the respective outdoor spaces.







MILW COLLEGE PREP

# NATURAL SCHOOLYARD PROJECT

---

1228





# Benefits of Natural Schoolyards

The benefits of natural schoolyards abound for scholars, educators, and communities, alike.

\* **SCHOLAR** – Better spaces to learn and play. Green schoolyards improve academic performance, reduce stress and behavioral challenges, encourage healthy physical activity, and more. Outdoor learning is especially beneficial for students facing poverty, racism, and trauma, helping to close education gaps.

\* **EDUCATORS** – New tools to inspire achievement. Green schoolyards are appreciated by educators because they help kinesthetic learners, are close to classrooms, and offer diverse experiences for students to connect lessons to the natural world. Outdoor learning also leads to healthier teachers and reduces burnout.

\* **COMMUNITY** – Greater community cohesion. Successful green schoolyards are the result of local collaboration. We engage educators, parents, and students about their priorities and desires to create a unified building plan. The project sparks cooperation, interdependence, and a common goal.

Green infrastructure design goals:

- Sensory garden
- Habitat garden
- Outdoor classroom
- Physical play
- Imaginative
- Loose parts
- Sensory
- STEM



*Example of a natural schoolyard*



*Examples of natural schoolyards*





# Natural Schoolyard at Lloyd Street

The map below outlines the proposed natural schoolyard enhancements for MCP's Lloyd Street campus, which features sustainable greenspaces including a bioswale butterfly garden and storybook trail, boulder and bench seating to create unique outdoor classroom spaces, a gaga pit for outdoor recreation, and more.



## Site Elements

- |   |  |   |  |
|---|--|---|--|
| 1 Existing Asphalt to Remain                        | 6 Crush Stone Pathway* (ADA Accessible)                      | 10 Story & Learning Trail* (Lawn Path & Storybook Signs x16)                            | 14 Expanded Butterfly Garden & Bioswale with Native Plants |
| 2 Existing Lawn to Remain                           | 7 Stepping Stone Pathway*                                    | 11 Student Plant Cultivation Garden* (4 Raised Garden Beds)                             | 15 Butterfly Houses and Paintings*                         |
| 3 Existing Trees to Remain, Typ.                    | 8 Mulch*   | 12 Informal Seating Area For Small Groups & Staff Recharge* (Logs, Boulders or Benches) | 16 Native Planting Area                                    |
| 4 Existing Playground w/ Rubber Surfacing           | 9 Interactive Sensory & Learning Garden (With Native Plants) | 13 Four Square and Gaga Ball Pit*   | 17 Shade Trees, Typ.                                       |
| 5 Amphitheater & Outdoor Classroom*                 |  |   | 18 Earth Mounds (Approx. 2' ht.)                           |
| 19 No-mow Lawn                                      | 23 Primary Access to Schoolyard                              |   |  |
| 20 New Fencing*                                     | 24 Re-use Existing Painted Pavers*                           |   |  |
| 21 New Asphalt Paving*                              | 25 Re-use Existing Benches*                                  |   |  |
| 22 Running Track and 100 Meter Dash Pavement Paint* |  |   |  |

*\* Elements marked with an asterisk require donations to finance.*





# Present vs. Desired Exterior



Amphitheater & Outdoor Classroom



Informal Seating Areas



Native Planting



Crush Stone and Re-use Painted Pavers



Butterfly Paintings and Houses



Student Plant Cultivation



Expanded Butterfly Garden



Stepping Stone Pathway in Bioswale



Interactive Sensory & Learning Garden



Story & Learning Trail



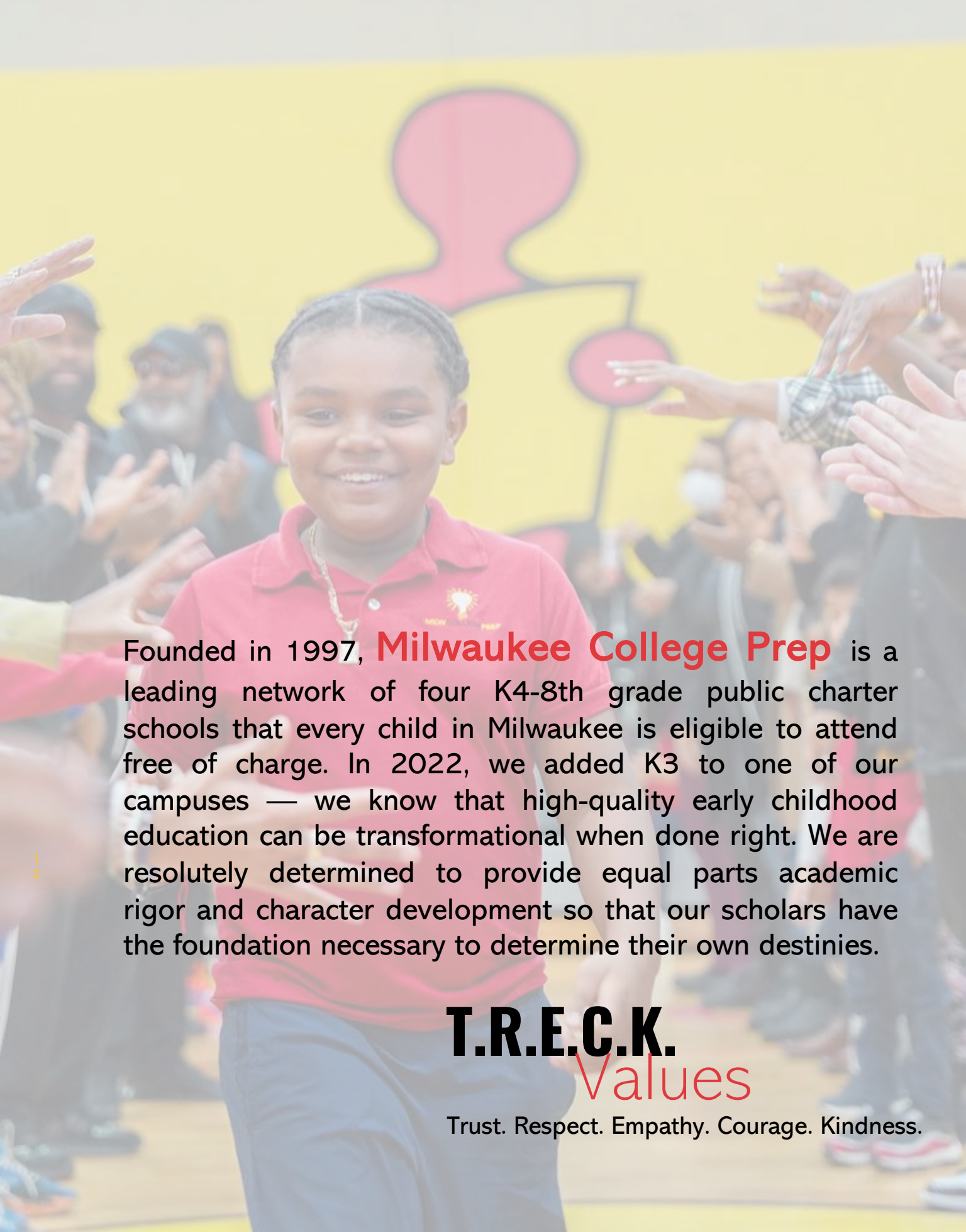




**ABOUT  
MILWAUKEE  
COLLEGE PREP**

---



A young girl with braided hair, wearing a red polo shirt with a small logo, is smiling and walking through a crowd of people. Many hands are reaching out to touch her. The background is a bright yellow wall with a large red graphic of a person's head and shoulders. The overall atmosphere is celebratory and supportive.

Founded in 1997, **Milwaukee College Prep** is a leading network of four K4-8th grade public charter schools that every child in Milwaukee is eligible to attend free of charge. In 2022, we added K3 to one of our campuses — we know that high-quality early childhood education can be transformational when done right. We are resolutely determined to provide equal parts academic rigor and character development so that our scholars have the foundation necessary to determine their own destinies.

**T.R.E.C.K.**  
Values

Trust. Respect. Empathy. Courage. Kindness.



**WE BELIEVE IN  
THE RELENTLESS  
PURSUIT OF EXCELLENCE.**



# MCP FACTS AT A GLANCE

**4 CAMPUSES** IN CENTRAL MILWAUKEE

**2,000+** K3–8TH GRADE SCHOLARS YEARLY

EDUCATING SCHOLARS FOR **27 YEARS**

91% OF OUR SCHOLARS ARE **BLACK**

**90%** OF MCP SCHOLARS ARE ECONOMICALLY DISADVANTAGED

**OVER 70%** OF MCP STAFF ARE BLACK OR LATINX

**SCHOOL LOCATIONS**

- 1** 38TH STREET CAMPUS  
2623 N. 38th St. | Milwaukee, WI 53210  
414-445-1000
- 2** 36TH STREET CAMPUS  
2449 N. 36th St. | Milwaukee, WI 53210  
414-445-8020
- 3** LLOYD STREET CAMPUS  
1228 W. Lloyd St. | Milwaukee, WI 53205  
414-264-6000
- 4** LOLA ROWE NORTH CAMPUS  
1350 W. North Ave. | Milwaukee, WI 53205  
414-264-6600

**5** MCP3  
1350 W. North Ave. | Milwaukee, WI 53205  
414-264-6007



**MILWAUKEE COLLEGE PREP**  
COLLEGE BOUND. CHARACTER STRONG.

KNOWLEDGE PLUS CHARACTER PAVE THE ROAD TO COLLEGE AND BEYOND  
[MILWCOLLEGEPREP.COM](http://MILWCOLLEGEPREP.COM)

# A Transformational Education

Highlighted below are metrics that showcase the uncompromising education that we provide to our scholars:

MILWAUKEE COLLEGE PREP RANKED

**9TH** IN READING

AND

**36TH** IN MATH

OF ALL CHARTER SCHOOLS STUDIED NATIONWIDE\*

\*2023 CREDO Report (Center of Research on Education Outcomes)

MCP K-2ND GRADE SCHOLARS

**SCORED ABOVE**

THE

**NATIONAL BENCHMARK**

FOR EARLY LITERACY SKILLS\*

\* On the Dynamic Indicators of Basic Early Literacy Skills (DIBELS) Assessment

**94% OF MCP ALUMNI**

WILL CONTINUE ON TO GRADUATE ON TIME FROM HIGH SCHOOL

**OVER 30% HIGHER** THAN THEIR PEERS

**IN MILWAUKEE**

THE FACTS ARE STAGGERING

**OVER 90% OF MCP SCHOLARS**

STAY WITH US YEAR OVER YEAR, ELIMINATING

**THE STUDENT CHURN** THAT IS SO

**DETRIMENTAL TO LEARNING**

MCP SCHOLARS DEMONSTRATE SIGNIFICANTLY

**HIGHER PROFICIENCY**

**IN ELA & MATH**

COMPARED TO THEIR MILWAUKEE-AREA PEERS

**OVER 80% OF MCP ALUMS**

WHO GRADUATE FROM HIGH SCHOOL

WILL GO ON TO A 2 OR 4 YEAR

**COLLEGE**





# Donate Today

## DONATE

Donate using PayPal by visiting [shorturl.at/cAEI6](https://shorturl.at/cAEI6) and selecting “Natural Schoolyards” in the “Use this donation for” drop-down menu.

Or, make checks payable to Milwaukee College Prep.

Mailing address:  
Milwaukee College Prep  
1228 W. Lloyd Street, Ste. 100  
Milwaukee, WI 53205

## LEARN MORE

[www.milwcollegeprep.com](http://www.milwcollegeprep.com)

## QUESTIONS?

Robyn Swernoff, Chief External Affairs Officer  
[robyn.swernoff@milwcollegeprep.com](mailto:robyn.swernoff@milwcollegeprep.com)

Clifton Crump, Chief Operating Officer  
[clifton.crump@milwcollegeprep.com](mailto:clifton.crump@milwcollegeprep.com)



**MILWAUKEE COLLEGE PREP**  
COLLEGE BOUND. CHARACTER STRONG.

KNOWLEDGE PLUS CHARACTER PAVE THE ROAD TO COLLEGE AND BEYOND  
[MILWAUKEECOLLEGEPREP.COM](http://MILWAUKEECOLLEGEPREP.COM)



KNOWLEDGE  
PLUS  
CHARACTER  
PAVE THE  
ROAD TO  
COLLEGE  
AND BEYOND